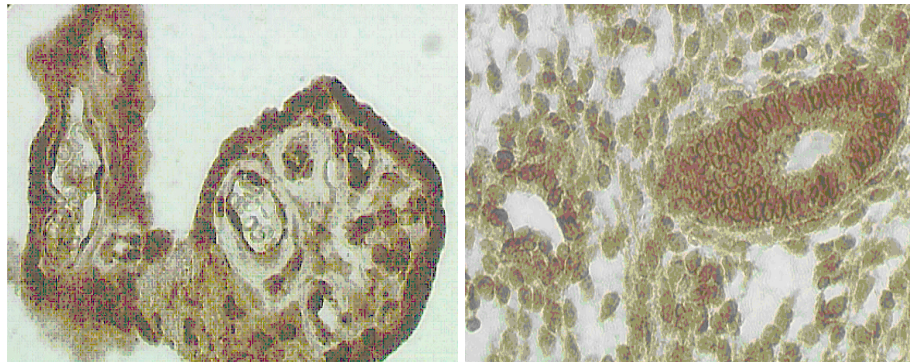

Product Specification Sheet

Description:	ANTI HUMAN VEGFR ₁
Product No.:	01-201
Lot No.:	
Antigen:	Synthetic peptide: ACCSPPPDYNSVVLSTPPI conjugated to KLH, corresponding to C-terminal of Human VEGF Receptor 1.
Host Animal:	Chicken White Leghorn
Purification:	This antibody was purified by PEG precipitation followed by ammonium sulphate precipitation.
Titer:	~ 0.2 mg specific antibody/ml. Positive in direct ELISA against peptide at 1:1,000.
Form:	Liquid. Chicken IgY fraction in 0.9% NaCl, 0.1% NaN ₃ .
Storage:	+4 to +8° C
Performance:	IHC, paraffin embedded sections: Positive staining of placenta (left) and endometrium (right) at dilution 1:10,000. Results shown are from experiment using the affinity purified antibody.



Approved/Date _____

Conditions

The products listed herein are for in vitro use only and should not be administered to humans or used for any drug purpose. The information presented is believed to be accurate. The information and products are offered without warranty or guarantee since the ultimate conditions of use and the variability of the materials are beyond our control. We cannot be responsible for patent infringement or other violations that may occur with the use of these products.